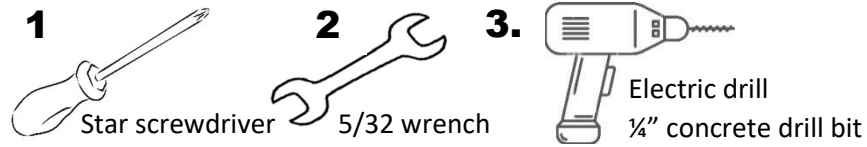


# ASSEMBLY AND INSTALLATION INSTRUCTIONS REMOVAL AND CARE GUIDE

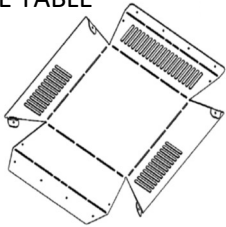
# Wall-E-COVER™

## TOOLS REQUIRED

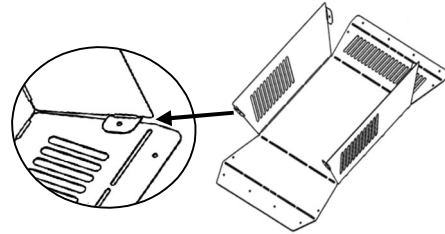


## ASSEMBLY

**1.** WALL-E-COVER STICKER FACING THE TABLE



**2.** FOLD ALL TABS INWARDS 90°. SMALL TABS ON INSIDE



**3.** INSERT SCREW HEAD FROM OUTSIDE. ATTACH LOCK NUT FROM INSIDE. TIGHTEN USING TOOLS.

**4.** TABS WITH WALL OR ROOF MOUNTING HOLES FOLD OUTWARDS 90°

## HARDWARE REQUIREMENTS

MODEL	PRODUCT NAME (SUMMARY)	ASSEMBLY HARDWARE (4) SCREWS (4) BOLTS	MOUNTING HARDWARE (4) PLUGS (4) SCREWS
-7734	Roof	✓	X*
-7762	Roof Boot Flashing	✓	X*
-7741	3" Roof Stack Insert	Not Required	Not Required
-7703	Universal	✓	✓
-7758	Extra Deep	✓	✓
-7796	Small slim	✓	✓
-7772	Universal Double Wide	✓	✓
-7789	Extra Deep Double Wide	✓	✓

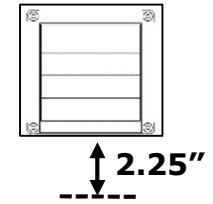
X\* (8) mounting screws required. Select screws according to your roof finish and thickness

\*\* Mounting hardware provided (screws & plugs) are not suitable for installation on stucco, aluminum or vinyl. The length of screw may vary.

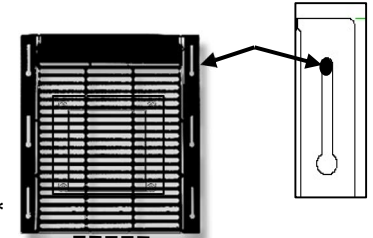
## INSTALLATION

### KEYHOLE FEATURE

- MEASURE 2.25 INCH FROM THE BOTTOM OF YOUR PLASTIC VENT THAT YOU ARE GOING TO COVER.
- MARK A LINE.



- MARK TOP OF EACH SLIT (6) WITH MARKER
- PRE- DRILL HOLES
- INSERT BLUE PLUGS INTO HOLES
- PLACE COVER – LINING UP HOLES WITH SLITS
- SCREW IN USING APPROPRIATE HARDWARE\*\*



### STUCCO, ALUMINUM OR VINYL SIDING

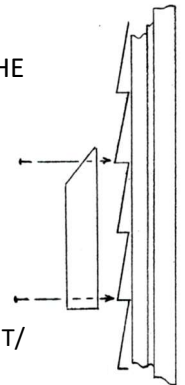
#### ALUMINUM & VINYL:

- ENSURE CONTACT IS MADE AT THE HIGHEST POINT OF THE SEGMENT.
- SCREWS MUST BE TIGHTENED MANUALLY TO AVOID DAMAGE TO SIDING.

STUCCO: USE SCREWS DESIGNED FOR STUCCO FINISH

#### NOTE:

CONTACT MUST BE MADE WITH THE STRUCTURE WALL (CEMENT/ WOOD) WHEN SECURING OR ANCHORING THE PRODUCT. SECURING ONLY TO THE TOP VINYL LAYER IS NOT SUFFICIENT.



**IMPORTANT NOTICE**

DRYER VENTS MUST BE CLEANED REGULARLY



**Warning**  
Fire risk

### ROOF VENT COVERS

- LARGEST TAB POINTS NORTH AND TUCKS UNDER SHINGLE.

